



8235 3 inch Twists 25 lbs
(10,800g) Approx. 1800 pieces

8235

Sour Punch 4 Flavors

Strawberry, Cherry, Blue raspberry, apple

Nutrition Facts & Ingredient Statement

Nutrition Facts

About 360 servings per container
Serving size **5 pcs. (30g)**

Amount per serving

Calories 120

% Daily Value*

Total Fat 0.5g 1%

Saturated Fat 0.5g 3%

Trans Fat 0g

Cholesterol 0mg 0%

Sodium 5mg 0%

Total Carbohydrate 26g 9%

Dietary Fiber 1g 4%

Total Sugars 14g

Includes 14g Added Sugars 28%

Protein 1g

Vitamin D 0mcg 0%

Calcium 0mg 0%

Iron 0mg 0%

Potassium 10mg 0%

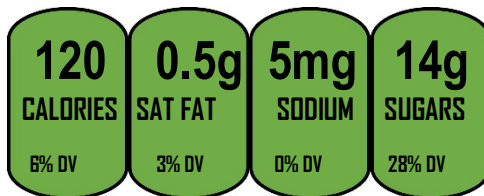
*The % Daily Value (DV) tells you how much a nutrient in a serving of food contributes in a daily diet 2,000 calories a day is used for general nutrition advice.

INGREDIENTS: CORN SYRUP, WHEAT FLOUR, , HIGH FRUCTOSE CORN SYRUP, SUGAR, CITRIC ACID, MALIC ACID, TARTARIC ACID, GLYCERYL MONOSTEARATE, GLYCERIN, ARTIFICIAL FLAVORS, COLORS ADDED BLUE 1, RED 40, AND YELLOW 5 (TARTRAZINE),.

ALLERGEN INFORMATION: CONTAINS WHEAT. CONTAINS BIOENGINEERED FOOD INGREDIENTS



42 servings per container



| | | | |
|-------------------|--|--------------------------------|----------------------|
| I:/LaPorteQuality | Nutrition Facts & Ingredient Statement | | Page 1 of 1 |
| Revision: 1 | 10/25/16 | UNCONTROLLED IF PRINTED | Editor: G.Veeramuthu |