

#7668



THE HERSHEY COMPANY

Bar, Kit Kat, (.49 oz snack size), 20.1 oz., US

Nutrition Facts	
about 20 servings per container	
Serving size 2 packages (28g)	
Amount per serving	
Calories 140	
% Daily Values*	
Total Fat 7g	9%
Saturated Fat 4.5g	23%
<i>Trans</i> Fat 0g	
Cholesterol <5mg	0%
Sodium 15mg	1%
Total Carbohydrate 19g	7%
Dietary Fiber <1g	0%
Total Sugars 15g	
Includes 14g Added Sugars	28%
Protein 1g	
Vitamin D 0.1mcg	0%
Calcium 30mg	2%
Iron 0.7mg	4%
Potassium 60mg	2%
*The % Daily Value (DV) tells you how much a nutrient in a serving of food contributes to a daily diet. 2,000 calories a day is used for general nutrition advice.	

INGREDIENT DECLARATION:

INGREDIENTS: SUGAR, WHEAT FLOUR, COCOA BUTTER, CHOCOLATE, LACTOSE (MILK), VEGETABLE OIL (PALM OIL, PALM KERNEL OIL), SKIM MILK, MILK FAT, CONTAINS 2% OR LESS OF: LECITHIN (SOY), PGPR, VANILLIN (ARTIFICIAL FLAVOR), SALT, YEAST, BAKING SODA.

RELIGIOUS STATEMENT AND/OR CERTIFICATIONS:

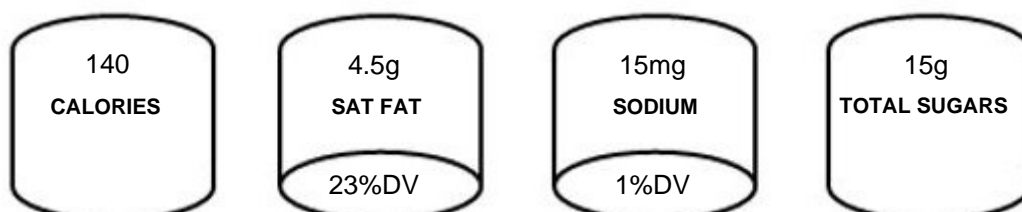
OU-D

ALLERGEN STATEMENT:

CONTAINS: MILK, WHEAT, SOY

MANUFACTURED IN A FACILITY THAT ALSO PROCESSES PEANUTS

FRONT-OF-PACK:



MATERIAL NUMBER:

3-01033-000	KitKat SS 20.1oz
3-01765-000	KitKat SS-Jmbo 20.1oz
3-01765-001	KitKat SS-Jmbo 20.1oz L4